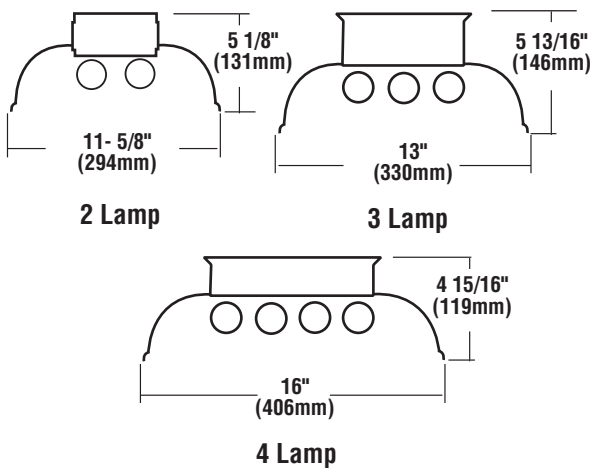


F20

PREMIUM INDUSTRIAL



DIMENSIONS



PRODUCT HIGHLIGHTS

- Solid top, one-piece reflector
- Quarter-turn, captive fasteners release reflector for easy access to ballast compartment
- Furnished with alignment clips and channel coupler
- Optional apertured reflector (7% upright standard, other configurations available)

CONSTRUCTION - Fixture housing, lampholder brackets, end sections and reflector constructed of code-gauge, die-formed steel. Housing channel crimped along sides for extra rigidity and straight alignment.

ELECTRICAL - All devices UL/CUL listed. Suitable for damp locations. Damp location emergency pack must be specified separately. Ballasts are energy saving solid-state electronic or electromagnetic as selected. Ballasts and lampholders replaceable without removing from ceiling. Discrete voltage must be specified for emergency pack options when wired with flex.

FINISH - All metal parts painted after fabrication following treatment with phosphate rust inhibitor. Finish coating of housing reflecting surfaces is with white, high reflectance (minimum 92%) polyester powder.

PHOTOMETRICS - Please visit our web site at www.lsi-industries.com for detailed photometric data.



ORDERING INFORMATION

TYPICAL ORDER EXAMPLE: **F20 3 32 SS010 EM UE**

Prefix	Lamps	Lamp Type	Ballasts	Options	Voltage	
F20	2 3 4	<p>T5 Lamps</p> <p>28 - 28W 48"</p> <hr/> <p>T5HO Lamps</p> <p>54HO - 54W 45"</p> <hr/> <p>T8 Lamps</p> <p>32 - 32W 48"</p> <p>59 - 59W 96"</p> <hr/> <p>T8HO Lamps</p> <p>44HO - 44W 48"</p> <p>86HO - 86W 96"</p> <hr/> <p>T12 Lamps</p> <p>34 - 34W 48"</p>	<p>Slimline Lamps</p> <p>48 - 39W 48"</p> <p>72 - 56W 72"</p> <p>96 - 75W 96"</p> <hr/> <p>T12HO</p> <p>48HO - 60W 48"</p> <p>72HO - 85W 72"</p> <p>96HO - 110W 96"</p> <hr/> <p>VHO (1500MA)</p> <p>48VHO - 110W 48"</p> <p>72VHO - 160W 72"</p> <p>96VHO - 185W 96"</p>	<p>SS5R - T5 Rapid Start</p> <p>SS5HO - T5 High Output</p> <p>SSO - T8 Instant Start</p> <p>SSOD - T8 Dimming (specify type)</p> <p>SSOL - T8 Low Watt</p> <p>SSOHL - T8 High Power Factor</p> <p>SSOR - T8 Rapid Start</p> <p>SSO10 - T8 <10% THD</p> <p>SS12 - T12 Electronic</p> <p>M12 - T12 Magnetic - VHO</p> <p>M12E - T12 Magnetic Energy Saving</p> <p>(For dual ballasts add "2" Example: SS02)</p>	<p>F - Fusing</p> <p>EM - Emergency Pack</p> <p>EMDL - Emergency Pack - Damp Location</p> <p>PM - Prewired Plug-in Assembly (specify circuitry. See Options/Accessories Section)</p> <p>U - Uplight reflector</p>	<p>120 - 120V</p> <p>277 - 277V</p> <p>347 - 347V</p> <p>UE - Universal Electronic (120-277V)</p>
Note: For tandem configurations suffix number above with "-2"						

ACCESSORY ORDERING INFORMATION

Description	Order Number	Description	Order Number
Wire Guard - 2 lamp	IWG-202	Clamp Hanger	CH-12
Wire Guard - 3 lamp	IWG-203	Chain Hanging Set (36" Length)	CHS
Wire Guard - 4 lamp	IWG-204		

12/10/08

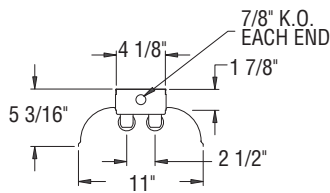
© 2009
LSI INDUSTRIES INC.

Project Name _____ Fixture Type _____
Catalog # _____

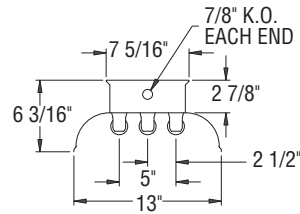


F20

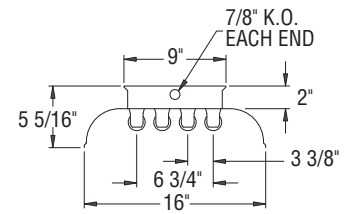
DIMENSIONS



F-202
2 LAMP
2 LAMP TANDEM

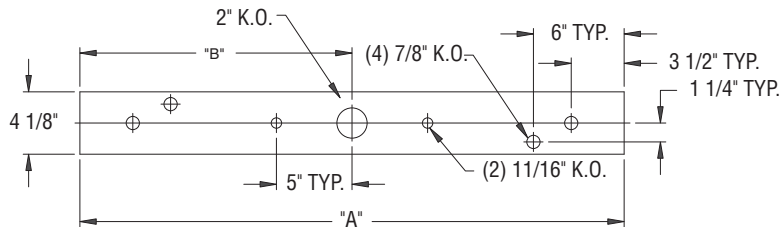


F-203
3 LAMP
3 LAMP TANDEM



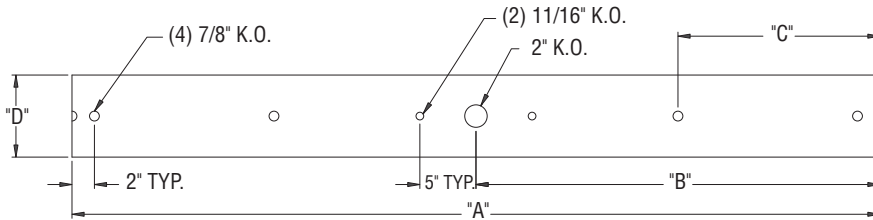
F-204
4 LAMP
4 LAMP TANDEM

MOUNTING



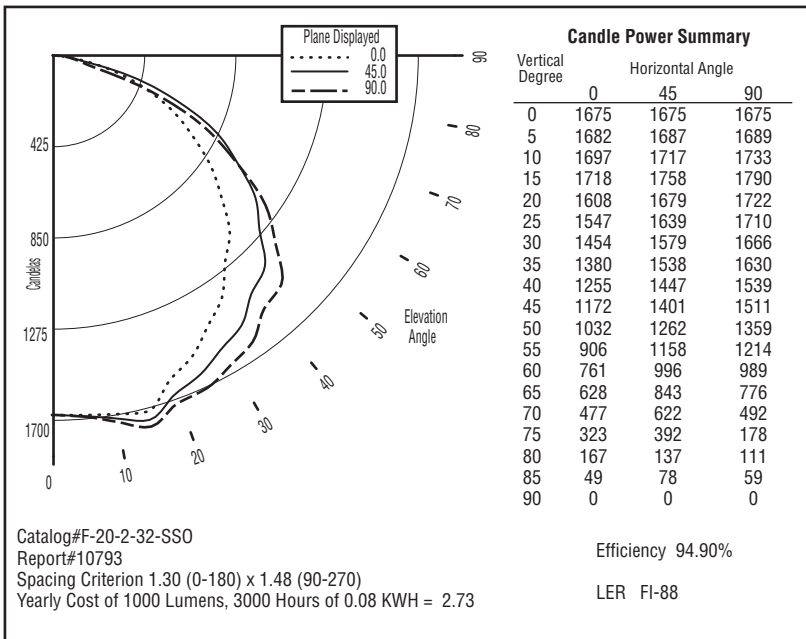
1-7/8" x 4-1/8"

CATALOG	"A" DIM.	"B" DIM.
F-202-32 F-202-34 F-202-44HO and F-202-48HO F-202-48	48"	24"
F-202-65HO F-202-72 and F-202-72HO	72"	36"
F-202-59 F-202-86HO F-202-96 and F-202-96HO	96"	48"



F-203
6' AND 8' BACK PUNCHING

CATALOG	"A" DIM.	"B" DIM.	"C" DIM.	"D" DIM.
F-203-48	48"	24"	NONE	7 5/16"
F-203-72	72"	36"	18"	7 5/16"
F-203-96	96"	48"	24"	7 5/16"
F-204-48	48"	24"	NONE	9"
F-204-72	72"	36"	18"	9"
F-204-96	96"	48"	24"	9"



Zone	Lumens	%Lamp	%Fixt
0-30	1402.54	23.8	25.1
0-40	2349.53	39.8	42
0-60	4382.41	74.3	78.3
0-90	5597.8	94.9	100
90-120	0	0	0
90-130	0	0	0
90-150	0	0	0
90-180	0	0	0
0-180	5597.8	94.9	100

RC	80				70				50			
	70	50	30	10	70	50	30	10	50	30	10	
0	113	113	113	113	110	110	110	110	105	105	105	
1	103	99	94	91	101	96	93	89	92	89	86	
2	93	86	79	73	91	84	78	73	80	75	71	
3	85	75	67	61	83	73	66	60	70	64	59	
4	78	66	57	51	75	65	57	50	62	55	50	
5	71	59	50	43	69	58	49	43	55	48	43	
6	65	53	44	38	64	52	43	37	50	43	37	
7	61	47	39	33	59	47	39	33	45	38	33	
8	56	43	35	29	55	43	35	29	41	34	29	
9	52	40	32	26	51	39	31	26	38	31	26	
10	49	36	29	24	48	36	29	24	35	28	23	